

A warm, slightly blurred photograph of a study or prayer session. A person's hand is visible at the top, holding a pen over an open book. In the foreground, three white ceramic cups filled with coffee are scattered on a dark, textured wooden table. Another open book lies to the right. The overall atmosphere is peaceful and focused.

G R O W

t^ogether

@ PATHWAY CHURCH



What if you could grow deeper in your relationship with Jesus than you ever imagined and make good friends along the way? The short-term groups and longer-term communities found in this brochure are designed to help you do just that.

Pathway Church exists to make disciples of Jesus who Love God, Grow Together and Serve Others. At a time when too many people find themselves lonely, we aim to connect people as they explore their purpose in life. Our FX and Community Groups explore life in a more intimate setting than a weekend worship experience, giving you room to ask your questions and find real friendships as you learn practical answers from the Bible. Meeting together in a small group setting gives you access to one of the greatest joys of walking with Christ: the people you meet on your journey with Him.

The following pages of this brochure introduce you to short-term groups (FX groups) that meet for about ten weeks on Sunday evenings. These topical, practical group studies offer you growth opportunities in areas of life from finances to marriage, parenting to prayer. Some invite you to dive into Scriptures deeper than you ever may have done before.

Also listed in this brochure are our ongoing Community Groups that meet at various times during the week. These groups are the best place for you to develop deep and lasting friendships with people as you grow together in your relationship "UP" to the Lord, "IN" with other believers, and "OUT" to the world with the Good News of Jesus.

I encourage you to give at least one of these groups a try. No matter where you are, I believe there is something for you at Pathway Church: a deeper relationship with the Lord, the sweet support of a community of believers and an opportunity to serve our city. I look forward to hearing what you gained from your FX and community group experiences!

Keith Evans, Lead Pastor



FX (FAMILY EXPERIENCE)

Discipleship for the entire family!

February 12 – April 9

*Short-Term Bible Studies - for information on these groups contact the leader listed or Lanette at lanette@greatergresham.org
6:00 to 7:30 Sunday Evenings. *class begins at 5:30*

Children (Birth - 6th Grade)

Childcare: Birth - 2yr.

3yr. – 2nd Grade: Kid Quest

\$10.00

Each week Kid Quest will include games, snacks, stories, friends and a 15 minute at home enrichment activity with rewards for completion. This fun curriculum is designed to assist kids in understanding that the Christian Life is more than just a Sunday Activity.

3rd - 6th Grade: Breakout

\$10.00

Each week of Breakout will include recreation, friends, snacks and a deeper look at the Bible. Breakout is designed to move your student toward spiritual maturity using a dynamic curriculum to help them Know Christ, Grow in Christ, Serve Christ and have a Mission in Life. Each week your child will have a 15 minute assignment to be completed at home to help students understand that living the Christian life is more than just church on Sunday!



7th – 12th Grade Student Community: “Not a Fan”

Led by: Josh, 503.679.8195, jkludt4@gmail.com

Cost: \$13.00

Our Student Community is for students who want to go deeper in their faith. This will be a tight, focused study that will require you to be open, honest and work during the week. There will be fun too! Come join the community!

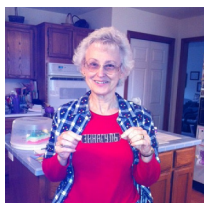


Study of the Book of John (Adults of All Ages)

Led by: Dr. Mike - MikeK@nwbaptist.org

Cost: \$5.00

Dr. Mike has been teaching at Gateway Seminary since 1989. A former pastor, he maintains a regular preaching and teaching schedule for local churches in the Northwest. His research interests include Bible translation, history of the English Bible, Baptist history, and apocalyptic literature. He and his wife, Terri, live in Gladstone, Oregon.



Lord, I Need Grace to Make It Today (For Women of All Ages)

Led by: Ceil - inglemoor2@gmail.com

Cost: \$16.00

There are times when we all wonder if we'll make it in life--Don't give up! God's grace is available freely and lavishly for all who will take it. Discover how to appropriate God's grace for every situation and every emotion you must face.



Authentic Manhood

Led by: Pastor Keith and Brian – joanne@greatergresham.org

Cost: \$10.00

What is a real man? There is a lot of confusion around that question these days. However, I've found that most men want to be good husbands and fathers and 'real men.' They just don't know how. This study gives a healthy, biblical example of what it means to be a real, godly, man and how to apply it to every part of life. Join us!

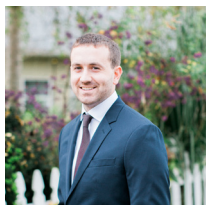


Intentional Parenting – (Limit 12 people)

Led by: Norm and Beth - connections.ggbc@gmail.com

Cost: \$21.00

This class will help you to learn how to foster faith and develop character in your children. This is not a “one-size-fits-all instruction manual” on how to be a great parent, but a process for formulating a unique plan for your unique family, based on research. This class requires approximately one hour of workbook preparation weekly in addition to the classroom time. This intentional approach to parenting will transform your family!



Study of the Parables of Jesus - Young Adults (College age to 30 years)

Led by: Kyle - kyletaylor@corban.edu

Cost: \$5.00

Walk through the stories that Jesus told to help people understand the kingdom of heaven and what it means to have a relationship with Him.



Experiencing God: Knowing and Doing the Will of God (Adults of all ages)

Led by: Bill - billm-theatron@juno.com

Cost: \$16.00

Through examination of biblical and contemporary illustrations, participants will understand and apply seven realities of experiencing God. This 10-week study is designed to help learners encounter and experience God each day, and to find where He is working and join Him there.



***Financial Peace by Dave Ramsey** – (All Age Adults, Minimum of 10 Required)

Led by: Ron - pompel48@gmail.com

Cost: \$95 per couple (\$45 refunded if class finished)

Designed to teach the family how to get out of debt and stay out of debt. Learn how to assess the urgency of your situation, understand where your money's going, create a realistic budget, dump your debt and clean up your credit rating.



Pathway Church Believes (All Age Adults)

Led by: Bob and Susan - bbowker4.0@gmail.com

Cost: \$5.00

Ever wonder what Pathway Church believes the Bible teaches? This class will give you the answers. Come and learn what we as a church believe the Bible teaches about Salvation, Baptism, Sin, God's Word and much more.

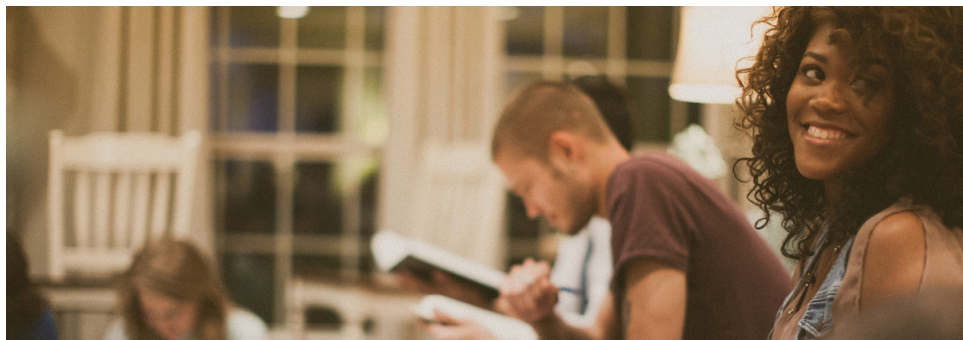


No More Perfect Moms (For Mothers Rearing Children)

Led by: Sheila and Jennifer - ljlogue@frontier.com

Cost: \$14.00

If you've ever forgotten to pick your kid up from soccer practice or accidentally worn two different shoes to the grocery store, this series is for you. The goal of this class is to help mothers everywhere shelf their desires for perfection along with their insecurities of not measuring up to other moms. Led by experienced moms, Sheila Allen (the mother of 2 grown daughters and grandmother of 6), and Jennifer Logue (the mother of a 6th grade daughter and a 3rd grade son).



WEEKDAY COMMUNITY GROUPS



Celebrate Recovery (Ages 18 and Older)

Led by: Dave Applin - 503.702.6599, coldshotdave@frontier.com

Cost: None (Donations accepted for dinner).

Monday @ 6:15pm in A-1 (The Rock)

Celebrate Recovery is an international 12-step program, specifically designed around Jesus Christ and the Bible. The evening includes dinner, worship, teaching and small group sharing. We gather for dinner at 6:15pm. The program starts at 7:00 and finishes at 9:00pm. Find encouragement and tools to deal with any hurt, habit, or hang-ups.



Simple Evangelism and Discipleship Strategy (S.E.A.D.S.) – women of all ages

Led by: Debbie, 971.275.3436 - thib.deb@juno.com

Cost: Cost of Materials

Meets every Tuesday from 9:30 – 11:00 am, 2nd floor of the children's building, preschool childcare provided. Studying the Ways of the Alongsider: Growing Disciples Life to Life by Bill Mowry. S.E.A.D.S. is designed to develop a lifestyle of evangelism and discipleship in every believer. The Women's S.E.A.D.S. group is intergenerational, calling women of all generations to be simply and purely devoted to Christ.

Community Group for 50's and Older

Led by: Chris - Chris.janosmiller@gmail.com

Cost: None

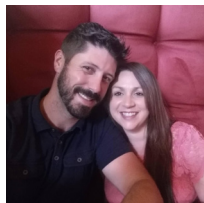
Meets on Tuesday evenings at 7pm in B-Building. Study will focus on Pastor Keith's sermon series, Joshua.

Faithful Friends Community Group (Adults 40 and older)

Contact Kim, flysafe@hotmail.com

Cost: None

Meets the 1st, 3rd and 5th Wednesdays of the month at 6pm - Studying Discipleship as a lifestyle. Faithful Friends is a community that understands and is committed to the multiplication of God's kingdom. There is food, support, friends, learning and growing in faith while discovering our mission.

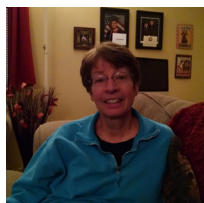


Parent 2 Parent Community Group

Led by: Tim and Nicci, tim.sellin@gmail.com

Cost: None

Meets every Wednesday night at 6:30pm. Come connect and share life with other parents in a small community. Grow in your relationship with Christ through Bible Study and prayer, reach out to others in service and enjoy yummy treats. Childcare provided.

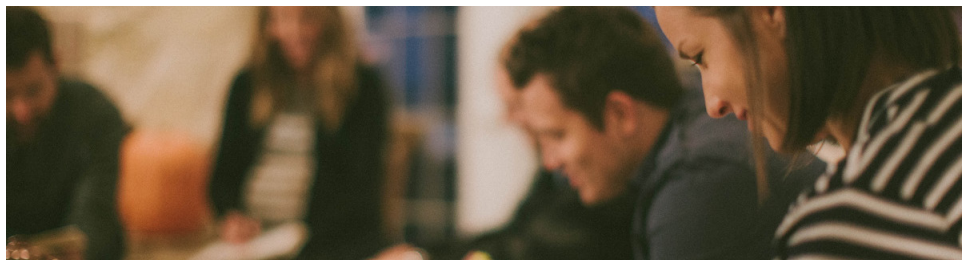


Discovery Bible Study Community Group (For all Women)

Led by: Karen, 503.830.0670

Cost: Cost of Materials

A Bible study for women - meets in B1 on Fridays, beginning January 6th, from 9:30 to 11:15 am and will be studying I and II Samuel.



SATURDAY/SUNDAY COMMUNITY GROUPS

SATURDAYS AT 7:30PM MEETING IN B BUILDING



Saturday Night Community Group (Multigenerational, mainly age 50-60)

Led by: Rick – rick@dmpros.com

Ages vary, we have a common goal of building a discipling community that seeks to live in obedience and faithful living. While we are strong on biblical teaching we also have a keen interest in developing relationships and mutual support. A potluck is served the first Saturday of every month.

SUNDAYS AT 9:00 AM MEETING IN B BUILDING



Mackey Community Group (50 and older)

Led by: Steve - SteveB@nwbaptist.org

A community of people that are learning to trust God through the many changes in this season of life. We are currently taking a 3-year chronological tour through the Bible, seeing how all of Scripture points to the Gospel Story. (Currently - studying the Prophets and Kings during the period of the divided kingdoms of Israel and Judah and will then finish the journey through the Old Testament by looking at the Exile and Return of Israel.)



Maranatha Community Group (50 and older)

Led by: Rick - rickanddona@yahoo.com

Maranatha Class is made up of loving passionate Christ followers who desire knowledge and wisdom from the word of God. Our community is working together to follow Christ in all areas of life at home, at work and with the church. We are studying Joshua in January and February. Come join us in making a difference for Christ by loving people, praying, feeding, clothing and sharing the simple Gospel of God.



Topical Bible Study Community Group (Adults age 20-40)

Led by: Bill - billm-theatron@juno.com

A community of people who want to grow deeper in their faith in Jesus and develop relationships with other people who live life together. We will study and discuss topics and themes related to our transformation and development as learners of Jesus. Time is also spent in fellowship and prayer.

SUNDAYS AT 10:30AM MEETING IN "B" BUILDING



Women of Purpose Community Group (Women 40 and older)

Led by: Linda - bboyd10@frontier.com

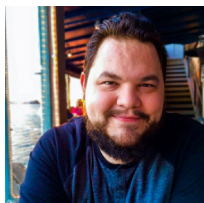
We are studying Joshua in January and February. In March and April, Judges and Ruth.



Seasoned Warriors Community Group. (Any age adult, most of the class is middle to senior adults)

Led by: Marlon - marlon@greatergresham.org

Studying 1 Thessalonians in January and February and a book of the Bible in March and April. Come and join in the lively discussions, seeking to make personal discoveries and applications from the biblical text we are studying and enjoy the opportunity to serve out in the community from time to time.



By the Book Community Group (Ages 20-50)

Led by: John – john.popovich@hotmail.com

We are a diverse group who desire to live life “by the book”. We study God’s Word and discuss how to apply it to our lives while being transformed by its powerful truth. We pray for and encourage each other toward spiritual maturity. We work together to serve our neighbors, community, world, and ultimately Christ. We value our social time and enjoy food, games and great conversations.

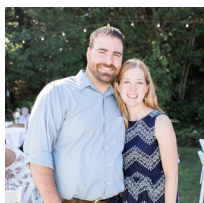


Acts 2:42 Community Group (Adults age 30-50)

Led by: Mike - mike@simplicityministries.org

A chronological, Christ-centered journey through the storyline of Scripture. Adult participants will encounter God’s plan of redemption in Scripture through study of Bible narrative, the essential doctrines of the faith, and the call to join in God’s mission locally and globally. We seek to grow in biblically defined relationship with God, with each other, and with those who are not followers of Jesus. Current study A Kingdom Established.

SUNDAY EVENINGS

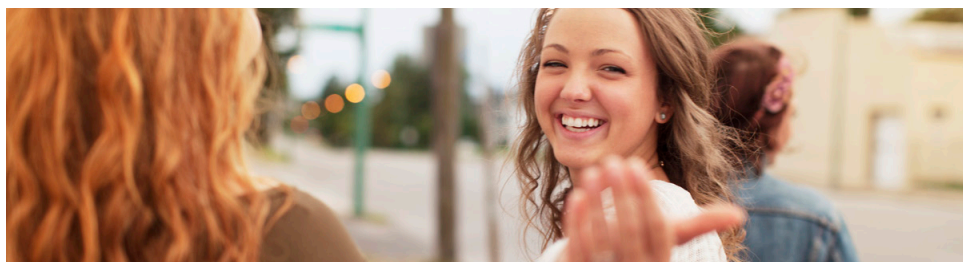


Young Adults Community Group (Ages 19-29)

Led by: Jeremy and Megan - jmlogue06@hotmail.com

A group of young adults who enjoy spending time in community by having fun, developing relationships with those around us and pursuing Jesus Christ. *Contact Jeremy for more information.*





OTHER OPPORTUNITIES TO CONNECT:



The Secret Place (All Adults, All Ages)

Led by: TJ Saling Caldwell - tjsalingcaldwell@gmail.com

The Secret Place is Pathway's corporate prayer time.

Meeting times:

- Sunday nights – place to be announced.
- Sunday mornings 9am in Pastor Keith's office (A Building) to pray over the services
- 1st Wednesday of the month at noon in the ROCK to fast and pray as a church
- 2nd Friday of the month at 7pm to Worship and Pray with live music in the ROCK

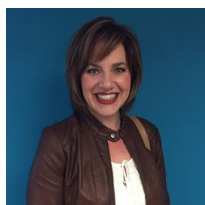


Pathway Adult Choir (High School Age and Older)

Led by: Gay McNeil - billm-theatron@juno.com

No prior musical training, experience or audition is required.

Wednesday nights, 6:30 to 8:00 in the Rock. We sing a Christmas and Easter musical and other opportunities as they are available. Childcare is available.



Momtourage (Moms)

Led by: Pam Claytor - Pamelaclaytor@comcast.net

A monthly gathering for mom's to connect with other mom's. We know it's hard to find extra time during the busy season of raising a family, but you will feel refreshed after spending some time with the ladies at Momtourage. We meet once a month on a Friday evening at 7pm. This connection group provides a time for women to encourage one another and build friendships with other women. Check out our current events calendar on our Facebook page: Momtourage Events @ Pathway.

Widow's Might (For all Widows)

Led by: Ruth K. 503.784.2251

A group of widows who get together to encourage each other and lift each other up.



PATHWAY

CHURCH | GRESHAM

3848 NE Division St. // Gresham, OR 97030
503.667.1515 // pathwaychurch.net